

AKRON-CANTON REGIONAL

**FOOD
BANK**

Together, We Thrive

2025 Annual Report



Hello friends,

In 2025, our community faced a moment unlike anything we've experienced before. For the first time ever, SNAP benefits — a lifeline for so many — were halted, disrupting daily life for thousands of local families. This loss of essential support created deep uncertainty for neighbors working hard to make ends meet.

The impact was immediate. Pantries, meal sites and food programs across our network saw a dramatic surge in demand. At the same time, our nation was navigating the longest government shutdown in its history, compounding the hardship for families already under strain.

While the need was rising, the Foodbank's resources were already stretched thin. State and federal budget cuts made earlier in the year significantly reduced funding for government-supported food programs, making it even more difficult to respond to this unprecedented increase in demand.

However, because of your immense generosity, your Foodbank and our network rose to the challenge with extraordinary determination. Local businesses, organizations, retailers, city governments and countless individuals rallied in support. Financial contributions enabled us to purchase more food, helping supplement the nearly 30% less government food support we received. Volunteers stepped in and staff stepped up. Distributions were added, services expanded and partners did everything possible to ensure neighbors had access to nourishing meals.

Amid these challenges, we also experienced a moment of incredible opportunity. The J.M. Smucker Co. made a transformational donation of property to the Foodbank — a transformational gift that will strengthen our mission in Wayne County for generations to come. It represents an investment not only in our organization, but in the future of our community.

**: As we reflect on this past year, one defined by resilience and
: incredible generosity, we are overwhelmed with gratitude. Our
: community proved once again what is possible when we come
: together with compassion and purpose.**

Thank you for standing with us — and with your neighbors — to help build a stronger, more hopeful community for all.



With thanks,
Daniel R. Flowers

Daniel R. Flowers, President & CEO

Compassion in action:

2025 impact at a glance

32.8M

meals provided, UP 4%



3.8M

visits made to food programs, UP 5%



42,255,309

pounds of food distributed, UP 6%



3,027,259

meals distributed to 454,585 people from our two onsite pantries

11,757,620

pounds of fresh produce distributed, UP 8%



661,103

pounds of food distributed through our mobile pop-up pantry, UP 73%



24,732

home deliveries made to neighbors with transportation and mobility challenges

Community generosity filled the gap

Meeting record demand amid reduced government support and shutdown

In early 2025, the Foodbank and our hunger-relief network faced a significant decrease in government food support. Cuts at both the federal and state levels reduced the amount of food available to our region by nearly 30%, equating to an estimated 5 million fewer meals.

At the same time, inflation and ongoing economic pressures continued to drive sustained, elevated demand for

emergency food across our eight-county service area.

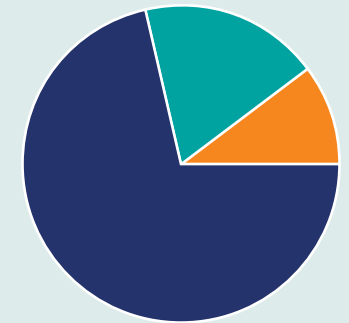
Soon after, the longest government shutdown compounded these challenges — disrupting household incomes, straining already tight budgets and delaying the distribution of food benefits through the Supplemental Nutrition Assistance Program (SNAP). Families who rely on SNAP were forced to seek emergency food assistance,



The Foodbank hosted drive-thru distributions to help neighbors when SNAP benefits were delayed during the shutdown.



Foods purchased



- Produce **73%**
- Shelf Stable **17%**
- Protein **10%**

resulting in a sharp surge in visits throughout the Foodbank's network.

As the lines grew longer and the heightened need was visible throughout the community, a passionate group of donors stepped forward to support a silent campaign known as Nourish Our Neighbors. Additionally, individuals, foundations, corporations, and local city and county governments came together with extraordinary generosity.

Thanks to community contributions, the Foodbank purchased more food than ever before to offset gaps caused by the cuts and shutdown, easing

the financial burden on the Foodbank and its network. In total, we purchased nearly 3.5 million pounds of food — the equivalent of 2.9 million meals — because our community rose to the moment.

These purchases helped keep our shelves stocked. We extended our pantry hours, added distribution days, expanded mobile pop-up pantry locations and deployed staff and volunteers to support hunger-relief partners across the region.

Because of you, help was there when it mattered most. Thank you.

Expanded support helped fill critical gaps

2.9M
meals distributed

97
truckloads of food purchased

44%
food purchased from local vendors

A historic investment in Wayne County, rooted in community



This campus represents an exciting new chapter for our work in Wayne County. We're committed to listening first – learning directly from neighbors, partners and community leaders about how this space can best serve the county. Our goal is to build something together that strengthens our impact today and well into the future."

Dan Flowers

Foodbank President & CEO

For more than 25 years, The J.M. Smucker Co. has stood alongside the Foodbank as a trusted partner in the fight against hunger. Through its iconic brands, Smucker has long helped nourish our neighbors by donating beloved pantry staples and has contributed millions of dollars and thousands of volunteer service hours — sharing in the Foodbank's deep commitment to strengthening our region.

That commitment reached a historic milestone when Smucker donated its Orrville retail facility and more than 30 acres of surrounding land to the Foodbank — marking the largest gift in the organization's history. The donation laid the foundation for what will become the Foodbank's new Wayne County Campus. In addition, Smucker partnered with the Wayne County Community Foundation to establish the Akron-Canton Regional Foodbank Food Security Fund and committed \$1 million to support new and expanded services.

Since the announcement, the Foodbank has met with key county stakeholders,

hosted a town hall for Wayne County hunger-relief partners, and collected survey responses from residents and community partners to inform our work.

From the beginning, the Foodbank has been committed to ensuring the Wayne County Campus reflects the needs and ideas of the community it serves.

For more than 30 years, the Foodbank has provided food and other essentials to Wayne County, where more than 15,000 people may experience food insecurity. In 2025, the Foodbank and its network of 38 Wayne County hunger-relief partners distributed more than 1.7 million pounds of food — a 22% increase over 2024 — and served 10% more neighbors than the year before. As demand for food continues to rise and federal and state food supports decline, pressure on the charitable food network remains high,



making innovation and collaboration more critical than ever.

Through a decades-long partnership and a truly transformational gift, The J.M. Smucker Co. has helped create new possibilities for hunger relief in Wayne County — ensuring the Foodbank can continue to adapt, grow and serve neighbors when they need it most.





Leave a lasting legacy of hope

Introducing the Foodbank's Legacy Circle

During the height of the pandemic, Jenn remembers getting ready for work, watching the morning news and being struck by a story about the long lines of cars waiting to receive food at the Foodbank. Families sat waiting — people who had lost jobs or seen their hours cut.

“As a child, I knew people needed food — but I thought it was in other countries,” Jenn said. “I didn’t think it was happening in our community.”

That morning changed her perspective.

She began making a monthly donation to the Foodbank, weaving generosity into her regular budget. For Jenn, giving

consistently is a reflection of values passed down from her family.

“My grandmother and my mother taught me to treat people with respect,” she said. “It didn’t matter if someone owned the company or was sweeping the floor — they deserved the same kindness.”

Though Jenn did not grow up experiencing hunger herself, she understands its impact.

“Food is fundamental. We all need to eat. How can we be our best selves without that foundation?”

“

I want to help people today. I want to help people tomorrow. And I want to help people in the future. When I’m gone, I can continue to help feed people.”

Jenn

Foodbank donor & Legacy Circle member

For Jenn, supporting hunger relief is about more than responding to a crisis. It is about thinking beyond herself.

“As we think of ourselves, we should think of others. What are their needs?”

Her commitment has grown into something more enduring. After careful planning for her retirement, Jenn made the decision to join the Foodbank’s Legacy Circle by naming the Foodbank as a beneficiary of her IRA. Through this simple yet meaningful act, Jenn ensured that her generosity would continue long into the future — providing reliable support for the Foodbank’s endowment, helping sustain hunger-relief efforts for generations to come.

Legacy Circle members are part of a community of visionary leaders who care deeply about creating a hunger-free future by including the Foodbank in their estate plans through a will, trust, beneficiary designation such as life insurance, or a life-income gift such as a charitable gift annuity.

“I want to help people today. I want to help people tomorrow. And I want to help people in the future,” she said. “When I’m gone, I can continue to help feed people.”

Jenn’s legacy is a testament to what is possible when foresight meets compassion.

Her story reflects the very heart of the Foodbank’s mission — to lead a collaborative network that empowers healthy, hunger-free lives across our region.

“I’ve always felt my purpose in life is to enrich the lives of others,” Jenn said. “I want to leave a legacy of giving back to my community where they need it and when they need it.”

Help feed the future. Join the Legacy Circle.

You, too, can create a legacy of hope. Together, we can build a future where no one in our community experiences hunger. Learn more at akroncantonfoodbank.org/legacy.

Volunteers: The heart of our work



Tasha restocks shelves while volunteering at the Stark County Campus.



11,364
total volunteers



78,207
hours served



Volunteering goes beyond distributing food. It's an opportunity to plant seeds of hope, show genuine kindness or offer encouraging words. One of the beautiful parts is that the neighbors, whether they know it or not, sow into me just as much."

Tasha

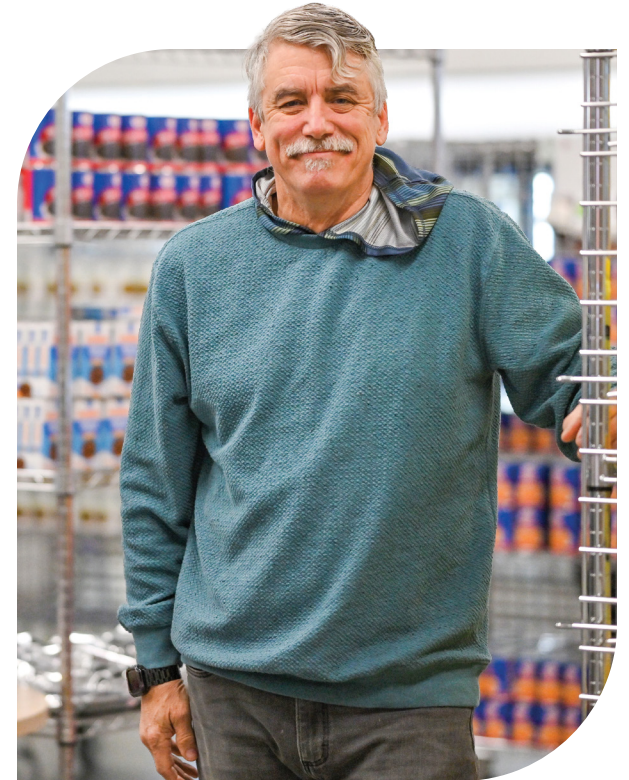
Stark County Campus volunteer



Is there anything more primal than reaching out, giving a hand, feeding someone? Whether it is with food or with kindness, it is a magic moment in a world that needs more magic."

Howard

Main Campus volunteer



Powered by the Can-Do-Crew



Suzy, a Can-Do-Crew member, volunteers in the MarketPlace.

Volunteers who contribute 100+ hours or volunteer 25+ times in a calendar year are part of the Can-Do-Crew.

This small but mighty crew of 250 volunteers contributed 41% of the total hours served in 2025.

To view the full listing, visit akroncantonfoodbank.org/Can-Do-Crew.

Feeding kids today. Strengthening futures.

The Feeding Kids Initiative provides kid-friendly foods through strategic partnerships, including weekend backpack programs, afterschool programs and more.

694,363

meals provided for children



286

sites focused on children



18,762

children served monthly

Nourishing older adults. Supporting independence.

The Commodity Supplemental Food Program is a federally funded program that works to improve the health of income-eligible older adults by supplementing their diets with nutritious USDA foods.

432,983

meals provided for older adults



20,189

food boxes distributed

1,730

older adults served monthly



Our sustainability efforts, powered by your support

Food banks are essential to sustainability — both environmentally and socially — because they sit at the intersection of food systems, waste reduction and community wellbeing.

Your Foodbank plays an active role in local sustainability efforts by redirecting nourishing food to people, not landfills. We do this by mobilizing our fleet of

trucks to rescue food from a variety of partners and by connecting hunger-relief programs directly with food donors. We also optimize our operational procedures to work toward sustainability.

Last year, the Foodbank deepened its commitment to sustainability by launching an employee-led committee dedicated to advancing green initiatives.



Composting

With support from Starbucks Coffee Company, the Foodbank launched a composting pilot to divert undistributed produce, dairy and bakery items. With strong staff and volunteer support, the program was successful and now operates full time.

Stretch-Wrap Recycling

Thanks to generous support from LyondellBasell, the Foodbank can now recycle stretch wrap with its new stretch-wrap baler.



9.6M
pounds of food rescued



242,433
pounds of aluminum, cardboard, paper and plastic recycled



21,002
wooden pallets recycled

The impact of recycling aluminum, cardboard, paper and plastic:



2,060
trees saved



848,232
gallons of water saved

Foodbank program earns national recognition for developing leaders across the network

Last year, the Foodbank received national recognition for Rise: A Recipe for Our Future — a leadership sustainability program designed specifically for hunger-relief partners.

The Foodbank was invited to present information on the program by Feeding America at a national conference in Texas, where staff shared data and best practices from the Rise pilot to help other food banks implement similar initiatives.



Rise is designed to strengthen the long-term sustainability of food programs within our network by preparing leaders for the future. The program offers

training on topics such as succession planning, fundraising, strategic planning, volunteer management and more.

The program also features local experts from nonprofits, food banks and other organizations who share strategies for building stronger, more inclusive and more sustainable hunger-relief programs.

Many food programs are led by dedicated volunteers, often older adults, and can face challenges when that leader retires without a successor in place. The Rise program aims to help food programs plan for their futures while ensuring continuity of service for our neighbors across the region.

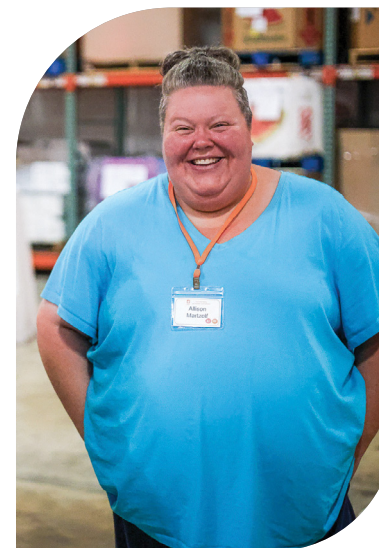
The Rise program will be offered biennially to a select group of hunger-relief partners, allowing them to form relationships and learn from one another while they complete the program.

Through this collaboration and shared learning, Rise gives participants the tools to lead resilient hunger-relief programs and positions the Foodbank's network to meet the future needs of our community.

Strengthening connections across our hunger-relief network

Last fall, the Foodbank welcomed more than 150 hunger-relief partners to our Biennial Network Gathering, transforming the volunteer center into a space for collaboration and shared learning.

Attendees participated in a variety of breakout sessions focused on building capacity and resilience within their organizations. In addition to popular topics such as fundraising and grant writing, new sessions addressed preventing burnout, resolving conflict and promoting nutrition through a live cooking demonstration. These opportunities reflected the diverse and evolving needs of our hunger-relief partners.



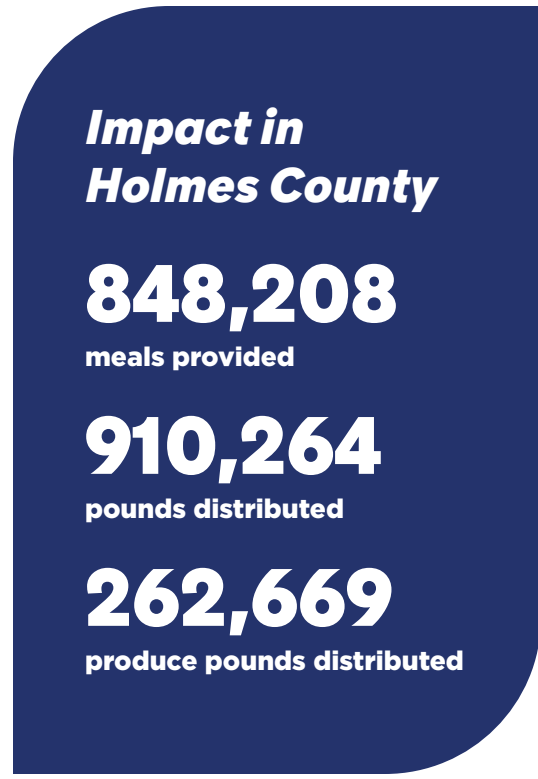
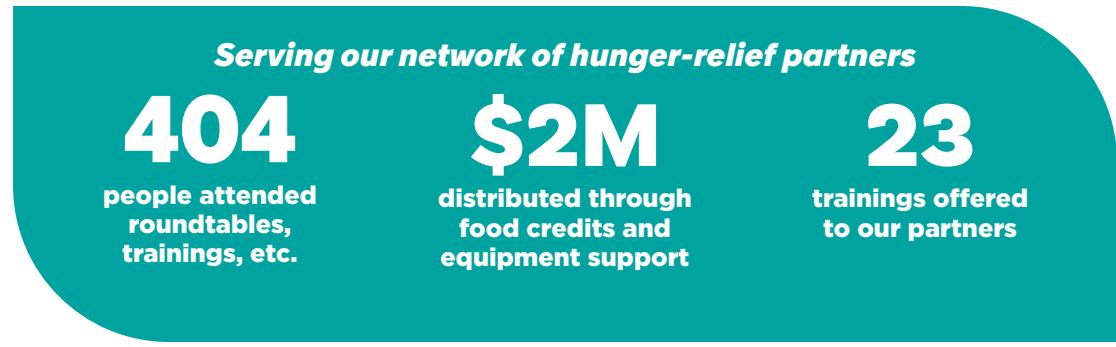
“

The biennial network gathering was an inspiring reminder of what's possible when organizations come together with a shared commitment to fighting hunger. The collaboration, energy and genuine care for our communities made the experience incredibly meaningful.”

Allison

Friends in Tents & Community Outreach

Foodbank network at a glance



Food programs providing the most meals in Holmes County

- 1 Millersburg Church of God
- 2 Love Center Food Pantry
- 3 Darb Snyder Senior Center



To view a complete list of hunger-relief partners, visit akroncantonfoodbank.org/Network-Partners.



Every meal has a story.

Meet Ruth Ann.

We meet Ruth Ann, 96, on a sunny afternoon at Carroll Golden Age Retreat, a residential facility for older adults in Carroll County and a Foodbank partner. She's lived in Carrollton her entire life.

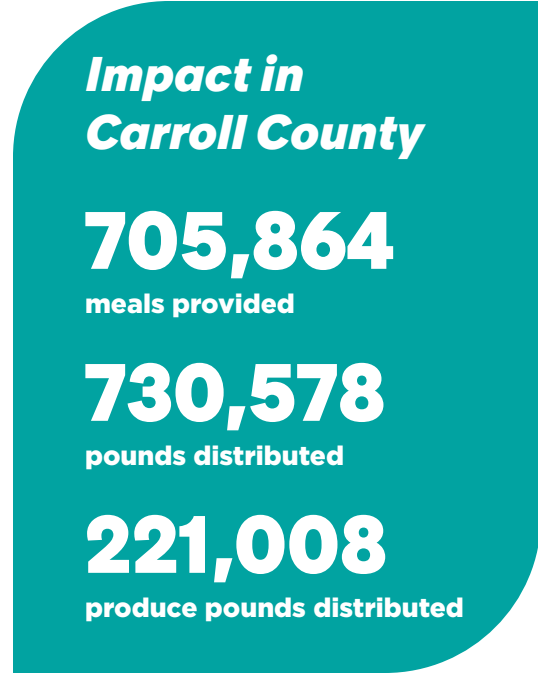
Ruth Ann recently moved to the facility and enjoys the activities it offers. The Retreat is a county-operated facility that provides assisted living, custodial care and respite services for older adults who lack the financial resources for reliable care. The facility offers its residents three nourishing meals each day.

"The food here is excellent," she says with a smile. "The treatment here is great and all the aides are very good. Everyone here is very nice."

Before retiring, Ruth Ann worked for 32 years as an office manager. After retirement, she volunteered at Loaves & Fishes Food Pantry, helping neighbors experiencing food insecurity and staying connected to her community. She also served on multiple nonprofit boards.

Her bedroom is filled with photos of grandchildren and great-grandchildren. She especially loves when they visit during the holidays. It's clear that Ruth Ann's story is rooted in family and a lifetime of service to her community.

Because of the community's support, Ruth Ann and countless other older adults have access to the nourishing groceries they need at any stage in life.



Food programs providing the most meals in Carroll County

- 1 Minerva Methodist Church
- 2 Minerva Community Outreach
- 3 Loaves and Fishes



Every meal has a story.

Meet Rory.

For 23 years, Rory kept semi-trucks on the road, working long days as a trailer mechanic — making sure drivers could get where they needed to go, safely and on time.

But recently he was laid off. Around the same time, his landlord died and the home he had rented for 16 years was sold.

Without steady work, Rory found himself without a place to live. He spent months in his van, then an abandoned home, and finally a storage unit.

“I can’t afford to rent a place for what they want per month — it’s half of what I have coming in. I can’t justify that and survive,” Rory shares.

Rory lives on a fixed income and makes just enough to disqualify him from SNAP. But it’s not enough to afford rent and groceries.

Eventually, friends helped him find a homeless shelter, a partner of the Foodbank, keeping him warm and safe.

As tears well in his eyes, Rory says, “This place offered me a roof over my head, warm food, a place I could cleanse my body and clothes, and somewhere to rest at night.”

They’re also helping him find an affordable apartment so he can get back on his feet and gain independence once again.

Thank you for supporting your Foodbank and neighbors like Rory.

Impact in Portage County

1,949,692
meals provided

2,040,470
pounds distributed

602,341
produce pounds distributed

Food programs providing the most meals in Portage County

- 1 The Salvation Army (Ravenna)
- 2 Brimfield Community Cupboard
- 3 The Salvation Army (Windham)

Impact in Medina County

1,765,142
meals provided

1,821,177
pounds distributed

678,960
produce pounds distributed

Food programs providing the most meals in Medina County

- 1 Feeding Medina County
- 2 Matthew 25 Outreach Center
- 3 Lodi Family Center



Food programs providing the most meals in Stark County

- 1 Canton For All People
- 2 North Canton Church of Christ
- 3 Alliance Community Pantry



Impact in Stark County

12,343,352
meals provided

12,996,416
pounds distributed

3,590,610
produce pounds distributed

To view a complete list of hunger-relief partners, visit akroncantonfoodbank.org/Network-Partners.



Every meal has a story.

Meet Nakea.

Nakea is resilient. She has a long-standing relationship with her local food distribution in Akron. Over the years, Open M has been a steady source of support for her and her family through different seasons of life.

Nakea is a mother of seven and a grandmother of eight. Currently, three people live in her household, including her 16-year-old twin boys. Nakea is currently unemployed due to a disability, but she is working with Open M's employment services to find a job that will work for her needs.

Nakea appreciates the help she receives, especially during the summer months and holidays when her children no longer receive meals at school.

"It's a real blessing," she says. "Everyone here is so polite. They are always here when you need somebody – even just to talk to."

Open M has been more than a food pantry for Nakea. Over the years, it's become a place of community, connection and support for her. Because of the generosity of the community, Nakea and her family have access to the food they need to thrive.

Impact in Summit County

15,649,594
meals provided

16,547,315
pounds distributed

4,222,457
produce pounds distributed

Food programs providing the most meals in Summit County

- 1 Ellet Community Church of God
- 2 Open M
- 3 The Salvation Army (Akron)

Impact in Tuscarawas County

4,477,059
meals provided

4,558,758
pounds distributed

1,663,931
produce pounds distributed

Food programs providing the most meals in Tuscarawas County

- 1 Greater Dover New Philadelphia Food Pantry
- 2 Journey's End Ministries
- 3 LifeWay Church



Food programs providing the most meals in Wayne County

- 1 Wooster Hope Center
- 2 New Destiny Treatment Center
- 3 Five Voices



Impact in Wayne County

1,669,177
meals provided

1,732,543
pounds distributed

642,821
produce pounds distributed

To view a complete list of hunger-relief partners, visit akroncantonfoodbank.org/Network-Partners.

Everyone can help fight hunger

Will you join the Legacy Circle?

Planned gifts play a vital role in sustaining the Foodbank's mission for the long term. By including the Foodbank in your will, trust or as a beneficiary of retirement assets, including charitable gift annuities, life insurance, or a donor-advised fund, you help ensure that resources will be available to support individuals and families facing hunger for years to come.

These legacy commitments represent an enduring investment in the community, extending the impact of today's generosity into the future. We are grateful to those who have already designated a planned gift. We welcome the opportunity to acknowledge your commitment and thank you for your support.

If you would like more information about joining the Legacy Circle, please visit akroncantonfoodbank.org/legacy or contact me today!

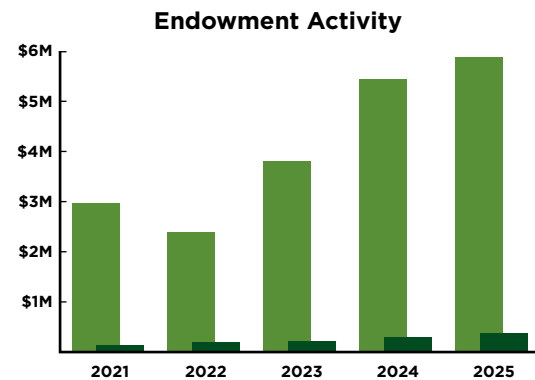


Debbie

Debra Hagarty, CFRE
dhagarty@acrfb.org
330.535.6900



Legacy gifts help grow the Foodbank's endowment, which has experienced significant growth in the past 5 years, thanks to a number of generous donors. Let your compassion uplift our community, ensuring no one faces hunger alone.



Year	Endowment Value	Distribution
2021	\$ 2,960,827	\$ 68,835
2022	\$ 2,378,049	\$ 99,915
2023	\$ 3,791,777	\$ 115,216
2024	\$ 5,435,542	\$ 152,178
2025	\$ 5,869,538	\$ 188,352

This **\$188,352** distribution from our endowment provided **more than half a million meals** in 2025!

We are grateful to these generous donors who have made a commitment to fight hunger in our region through their legacy gifts.

LEGACY CIRCLE MEMBERS

- Anonymous (5)
- Harry & Cathleen Arble
- Jean Bender*
- Gary Benz
- Caroline Brooks*
- Edna L. Carlson*
- Ron Clayton
- Billie R. Coile*
- Mathew Contessa*
- Barb M. Croghan
- Edna M. Fillinger*
- Nickolas & Debra Flesor
- Ken and Mary Anne Focazio
- Jennifer Gaylor
- Kenneth* and Janet* Gisewhite
- Dr. Theodore Gloeckler
- Frank Walter Green*
- James & Debra Hagarty
- Bonita S. Hahn
- Stephen and Mary Hailer

- Kris Halter
- James H. Hower*
- Mark E. Hudak and Georgia A. Pinis
- Sarah Iammarino
- Robert J.* & Marthe* Jursich
- Traci A. Kalamajka
- Karen A. Kapes*
- Elaine J. Klekotka*
- Michael F. Kosir*
- Terri & Robert Lessnau
- James J.* and Nita C.* Lombardi
- Elona K. Lucas
- Shirley Ludwig*
- Joseph A. Maresco
- Joan E. Marsh*
- Beverly Maxhimer
- Janet McPeek
- The Keith D. Monda Family
- John S. Mosser*
- Harvey & Kim Nelson
- Daniel & Lorraine Nelson

- Timothy Nesbitt*
- Mary Ellen Riehm*
- Barbara H. Risso*
- Bruno Rocca*
- Jonathan W. Sprunger
- Michael & Mary Louise Sweeney
- Theodore & Maureen Unton
- Mary E. Vantz
- David & Cheryl Venarge
- Tanya A. Walkin
- Ada M. Zimmerman

NAMED ENDOWMENT FUNDS

- American Electric Power Foundation Endowment Fund
- Albrecht Apple Endowment Fund
- Robert & Nancy Gessner Endowment Fund
- David & Cheryl Venarge Endowment Fund

**In Loving Memory*



“

The more people who join the Legacy Circle, the stronger we are – and the more people we can help for as long as we are needed.”

Dan Flowers
Foodbank President & CEO

Foodbank Investors

\$250,000+

FirstEnergy Foundation
 Robert & Nancy Gessner 🍷
 Giant Eagle
 Greg & Tricia Griffith 🍷
 James J.* & Nita C.*
 Lombardi Trust
 The J.M. Smucker Co. 🍷
 David & Cheryl Venarge 🍷

\$100,000+

Anonymous
 Jon & Kitty Antalvari 🍷
 Buehler's Fresh Foods
 Cleveland Clinic
 GAR Foundation 🍷
 The Gessner Family
 Foundation
 Feeding America 🍷
 The Hoover Foundation 🍷
 Kaulig Companies
 Championship
 Starbucks Coffee Company
 Stark Community
 Foundation 🍷
 Tam Taylor
 Bill & Joan Thomas 🍷
 Timken Company Charitable
 and Educational Fund 🍷
 Walmart & Walmart
 Foundation
 Westfield

\$50,000+

Allied Witan Company
 Amazon
 Anonymos
 Bauhart Family** 🍷
 Stuart & Pam Clink**
 Enterprise Mobility
 Foundation
 GOJO, Makers of Purell
 The Goodyear Tire &
 Rubber Company
 David & Nicole Groves 🍷
 Sandra L. and Dennis
 B. Haslinger Family
 Foundation 🍷
 Heinen's Grocery Store
 The Huntington Foundation
 Huntington-Akron Foundation
 The Edward A Langenbach
 Trust Fund
 Bill & Pearl Lemmon 🍷

Meijer
 The Keith D. Monda Family
 Nationwide Foundation
 Robert O. & Annamae Orr
 Family Foundation 🍷
 David & Julie Pratt 🍷
 Louise Pursley 🍷
 Sequoia Financial Group, LLC
 Mark Sterling
 Synthomer Foundation 🍷
 Brian & Beth Tierney 🍷

\$25,000+

Akron-Canton Regional
 Foodbank Staff
 Akron Community
 Foundation 🍷
 Anonymous (4)
 Aultman Health Foundation
 Barberton Community
 Foundation
 BCF Endowment Fund
 The Beaver Excavating
 Company
 Ken & Gerri Blum 🍷
 Family of H. Peter Burg
 Kenneth L. Calhoun
 Charitable Trust
 The Christ Foundation
 Citizens
 Coldiron Family Foundation
 Paul & Carol David
 Foundation
 Enbridge Gas Ohio 🍷
 Famous Enterprises, Inc.
 Alex R. Feil & Arabella
 Winters
 GPD Group
 Bruce & Erica Greer
 John Hinds
 Nancy Istenes & Sean Ward 🍷
 Kovatch Castings, Inc.
 Kovatch Family
 Charitable Fund
 James & Grace Kozak
 Kraft Heinz Company
 Roger & Susan L'Hommedieu
 Andy & Emily Little 🍷
 Kristen Manes
 North Canton Medical
 Foundation
 Susie & Tony Paparella 🍷
 Joan & Lou Perry
 RPM3 Charitable Fund

Sheetz For The Kidz
 The Sisler McFawn
 Foundation
 Subaru of America, Inc.
 & Serra Subaru
 Kevin Tucker & Patricia Howell
 United Healthcare of Ohio

\$10,000+

Akron Area Interfaith Council
 Akron RubberDucks
 Tony Alexander
 Florence Allen* 🍷
 The Parke K. and Josephine
 B. Allensworth
 Memorial Fund at Stark
 Community Foundation
 Allstate Foundation and
 Allstate Employees
 American Electric Power
 Foundation 🍷
 The Nancy Andrews Family
 Foundation 🍷
 Anonymous (15)
 Anonymous*
 Anonymous**
 The Anonymous Charitable
 Fund at Stark Community
 Foundation
 Richard & Linda Arter
 Atlantic Food Distributors
 Avery Dennison
 James & Lisa Backlin
 Mark Baer
 Ronald & Grace Barber
 Bober, Markey, Fedorovich
 & Company
 Amy & Scott Borcharding
 BoxLunch
 Bridgestone Americas
 Brubaker Family Foundation
 Burns & McDonnell
 Engineering Co., Inc.
 Canton LMCC, North Central
 Ohio Chapter, NECA
 Phillip & Debra Canuto
 Cargill, Inc.
 Lynn Cavalier
 Charter Next Generation
 The Mary S. and David C.
 Corbin Foundation
 CVS Health
 Dave's Markets

Rich & Jacqueline Deger
 East Central Ohio Building
 & Construction
 Trades Council
 Faith Family Church
 Fastenal Company
 Catherine & Gerhard Feagles
 FedEx
 Marsha Field Jones
 Fifth Third Bank 🍷
 First Congregational
 Church of Hudson
 and First Serve
 Dan & Holly Flowers
 Walt & Kathy Fortney
 Fraternal Order of Eagles
 Aerie 141 (Canton)
 Fraternal Order of
 Eagles Aerie 2223
 (North Canton)
 Laura B. Frick Charitable Trust
 Mitchel & Simone Fromm
 Charles & Monique Fuenning
 Kevin & Peggy Gaffney
 Rebecca German
 Christopher & Jane Gessner
 The Giant Eagle Foundation
 GPD Group Employees
 Foundation
 Bill & Rose Graessle
 Diane L. Graham**
 David & Karen Grau
 Frederick & Jane Grieb
 Sue Habyan
 Donald Hafner
 Nancy Harwood
 James Hayne
 Health Foundation of
 Greater Massillon
 Robert & Nancy Henry
 Holy Cross Lutheran Church
 W. Henry Hoover Fund
 Huntington National Bank
 Charles R. Jelm Charitable
 Foundation, Inc.
 Ralph R. and Grace B.
 Jones Foundation/
 Greg and Kathy Long
 Steve & Debbie Joseph
 Garry Jurgens
 The Robert & Marthe
 Jursich Foundation
 Daniel Kellogg 🍷

The Dale and Peggy
 Koblenzer Family Fund
 James & Joanne Komos
 James & Maureen Kovach
 Vincent & Maryann Kyle
 Rick & Lisa Laubacher
 The Lehner Family
 Foundation
 Dale A. & Lucinda J.P. Leppo
 Betty Levinson 🍷
 Jim & Sally Little
 Jeffrey & Susan Lubash
 LyondellBasell
 Marathon Petroleum
 Company - Ohio
 Refining Division 🍷
 Michael & Joyce Markel
 Susan L. Martin
 Janet Marting
 The Maynard Family
 Foundation
 MCTV 🍷
 Matt & Baily Meeker
 The Meyer Company
 Charitable Fund
 Chris Meyer & Colleen
 Denholm
 Melany Minney
 John & Karen Monacelli
 Kathy & Andy Mook
 The Thomas W. Hudson
 Charitable Fund of
 Muskingum Watershed
 Conservancy Foundation
 NADA Foundation
 Harvey & Kim Nelson
 NJM Insurance Group
 Drs. Keith and Susan Novak
 (Hong) Charitable
 Trust Foundation
 Ohio CAT
 The M.G. O'Neil Foundation
 Hyun & Catherine Park
 Parker Hannifin Corporation
 Buffy Phillips 🍷
 PPG Industries, Inc.
 Gary & Cheryl Prather
 The Ada C. and Helen J.
 Rank Foundation
 Ripple Effect CLE Fund
 Charles E. & Mabel M. Ritchie
 Memorial Foundation
 Rotary Club of Fairlawn
 Mary Anne Rothermel**
 The Pablo Javier Rozenbom
 Charitable Trust Fund
 Patricia Ruddle

James & Cynthia Rudick
 Dr. Sandy Selby
 Nilesh & Holly Shah
 Larry & Bonnie Shirk
 Kenneth Siloac
 Lloyd L. and Louise K. Smith
 Memorial Foundation
 Tim & Jennifer Smucker
 T.L. Squire & Company Inc.
 Stark Hunger Walk
 Kerry & Julian Steinberg
 Jeffrey W. Sterling
 The Edwin J. Thomas
 Foundation
 Barb & Don Tolliver 🍷
 Larry & Blythe Toops
 Truenorth
 Carl Vogelsang
 Michael & Maureen Wartko
 Tom & Peggy Wartko 🍷
 Wayne County Community
 Foundation
 Barry Weidner Memorial
 Golf Tournament Fund
 Joseph & Cynthia Weinstein
 Thomas & Cheryl Wells
 Denise & Norman Wells Jr. 🍷
 The Welty Family Foundation
 Werner-Marsh Family
 Ray Williams
 Anne & Butch Wilson
 Karen Wilson

\$5,000+

Akron Children's Hospital
 Mark & Shelly Allio
 Ronald Aman
 Ameriprise Financial
 Services
 Anonymous (10)
 Anonymos**
 John & Carol Antonelli
 Mr. and Mrs. S. Arbogast
 Sandra J Arbuckle
 Charitable Fund
 Arhaus
 Bill & Cindy Artman
 Peter & Heidi Augustin
 Robert & Judith Baer
 Sandy & Bruce Bailey
 Charles Baker
 Benjamin & Sarah Beachy**
 Richard & Diane Becker
 William H. & Jeanne Belden
 Philanthropic Fund
 of Stark Community
 Foundation

Gary Benz
 Michael Bernard
 James & Anne Bilbrey
 Jack & Deborah Blakney 🍷
 BODYARMOR Sports
 Nutrition
 The G. Scott and Carol B.
 Booth Charitable Fund
 at Stark Community
 Foundation
 Robert & Rebecca Brehmer
 Bridgestone Americas
 Trust Fund
 Joseph & Carol Brooks
 Buckeye Corrugated, Inc.
 The Butterworth Foundation
 Dr. Joseph Cacchione
 Caliber Collision Centers
 Foundation
 Carlisle and Troiano
 Family Fund
 Elizabeth Caveny &
 Wayne Hedrick
 Cenweld Corporation
 Charles & Karen Chadwick
 Renold & Lichelle Chirakos**
 Church of the Lakes
 Robert & Carrie Clark
 Stephen Coleman
 ComDoc
 Community Christian Church
 Stephen Comunale
 Timothy & Marla Conley
 Crystal Ship Charitable Fund
 CSE Federal Credit Union
 Fred & Misun Cummings
 Currier Anesthesia
 Consultants
 Dr. David Currier & Dr.
 Jeannette Cho
 Brett Custer
 Nancy & James Dalton
 The Danner Foundation
 Fund
 Dave, Inc.
 Howland & Beverly Davis
 The George L Deal
 Philanthropic Fund
 Cynthia Deliz
 Bruce & Denise DeVore
 Marcella & John Emmons**
 Farmers National Bank
 Thomas & Kathryn Fiala
 Lucian Filippschi &
 Patricia Buckeye
 Frank & Nancy Finelli

The Albert W. & Edith V.
 Flowers Foundation
 The Harry K. and Emma
 R. Fox Charitable
 Foundation
 Mary Franks
 Tracy Frazee**
 Fresh Mark, Inc.
 Richard & Christine Gable
 Norman & Pamela Gaynor 🍷
 Dale Gilbert & Mildred
 Keyser
 The GirlClub3 Fund
 Stacey & Jeffry Gonzalez
 Lynda Grieves
 Suzanne Hetrick
 HEXPOL Compounding
 Dan Hoehn & Katie Gallagher
 Jeff Hornak
 Howmet Aerospace
 Foundation
 Jennifer Hugill
 Mark & Janice Husted
 IRG Realty Advisors
 JAH Foundation
 Jamf Software
 Philip & Kathleen Janecko
 Gary & Sherry Johanning 🍷
 Paul & Cookie Joseph
 Jeffrey & Elizabeth Kahrs
 Janice Kelly
 Kimley-Horn Foundation
 Phyllis Knepper
 John S. and James L.
 Knight Foundation
 Richard & Christine Kramer
 Diane Krum
 James LaRose
 David Lathrop &
 Yvonne Gillette*
 Nick & Kathy Lekas
 Marie Libby
 Gary & Susan Lichten
 Nathan Lieb
 The Dorothy E Lloyd
 & George W Lloyd
 Charitable Fund
 Riley Lochridge &
 Barbara Lochridge
 Logsdon Family Foundation
 Lawrence & Mary Lohman**
 Richard & Rosemary
 Lombardi
 The Lubrizol Foundation
 James & Claudia Markwald
 Michael & Marietta Marquart

\$5,000+ (CONT.)

Beatrice K. McDowell Family Fund
 Joyce McKnight
 Mark & Susan Metzger
 Karen & David Mickley
 Glenn & Diane Miller
 Thomas Mills*
 Milton James Foundation
 The Mitsui USA Foundation
 Laura R. & Lucian Q. Moffitt Foundation
 Michael & Julie Moldvay
 Monica Moody
 Stephen & Mindy Morris
 Dorothy Moser**
 National Interstate Insurance
 LaVonne Neal in loving memory of Rick Neale
 Daniel & Lorraine Nelson
 Nestle USA, Inc
 Herbert & Dianne Newman**
 Bryan & Alina O'Connell
 Brian O'Connor
 Ohio Health Benefits, LLC
 Ollie's Bargain Outlet
 O'Reilly Auto Parts
 Gertrude F. Orr Trust
 Advised Fund of Akron
 Community Foundation
 Terry & Edda Owen
 The Arthur L. Parker Foundation
 James M. Parry
 Terry & Evelyn Peach
 Peoples Bank
 Bill & Ginny Post
 The Roy H. Powell and Nina B. Powell Family Charitable Fund at Stark
 Community Foundation
 Pro Football Hall of Fame
 ProVia
 Quanex Building Products
 John & Diane Ramsburg
 The Roger Read Family
 David & Sharon Regiec**
 James & Esther Rehmus
 Elizabeth Reilly & Scott Piepho
 John & Constance Ring
 Duane & Earline Roe**
 Ron Marhofer Auto Family
 George & Janine Rosche
 Jon Rosenblatt
 Allen & Laurie Rovner
 Frank & Bonnie Rowe

Joe & Annette Ruby
 The John W. and Juanita E. Sanders Foundation
 Christopher & Denise Scala
 Kevin & Denise Schaffner
 Schauer Family Fund Inc
 Jacob Scherger**
 The Schiltz Family
 Carl & Mindy Schleich
 James Schmotzer
 William & Nancy Schrader
 David & Ellen Schutter
 Cory Scott & Emily Wiser
 Joseph & Joan Selden
 Janet Sessions
 Sheetz, Inc.
 Siddall Family Fund of Akron
 Community Foundation
 James & Janet Singleton
 Kenneth & Lauren Smith**
 Nancie Smith
 William Spalding**
 Gary & Patricia Spring
 State and Federal
 Communications, Inc.
 Stifel Charitable Inc.
 Summit Foundation
 Thomas Svoboda & Arlyce Deeter
 David & Mary Sweet
 Synchrony
 Mike & Betty Taipale
 Thrivent
 The W.R. Timken, Sr.
 Memorial Fund at Stark
 Community Foundation
 The TJX Companies, Inc.
 Tuscora Park Health & Wellness Foundation
 James & Evelyn Unger
 Sue Ellen Utley
 Visconsi Companies
 Sarah Vradenburg
 Zach & Sharon Wemple
 Jeff & Missy Wert
 John & Carol White
 Jason & Emily Whitfield
 Joe & Karen Wilk
 Betty Wilkins
 Fred & Sue Wilson
 Joseph Wozny
 Barbara Wright
 Carl & Lynn Young
 Ziegler Tire

\$2,500+
 Virginia C. Addicott and Family

William & Linda Alford
 Allegiance Group + Pursuant
 American Legion 44
 Memorial Fund
 Richard & Rita Amstadt
 Brad & Wendy Andrew
 Andrew's Spirit of Hope
 Amalie Angel
 Anonymous (13)
 Harry & Cathleen Arble**
 Lois Arnold
 Dr. Jennifer Baccon & Adam Beck
 BAE Systems
 Paul & Helen Ballard
 Pete & Janice Ballos
 Edward & Jennifer Banker
 Marilyn Barnum
 Lawrence Barton
 Judith & David Bearer**
 Mary & Matthew Becker
 Jonathan & Kim Bellissimo
 Thomas & Elizabeth Bender
 Colleen & Joel Benson
 BFG Federal Credit Union
 Frances Bittle
 Christopher & Jennifer Blasio**
 James Boex
 John Boughton
 Kenneth & Kathleen Bower
 Christine Bradshaw
 Rita Brainerd
 Marilyn Breiding**
 David & Cynthia Brunner
 Bryan & Laura Buck
 David & Kay Burdette
 Jim Burke
 David Burkholder
 James & Genevieve Burkholder
 Rebecca Burrow
 Philip & Amielie Cajka**
 CANstruction Cleveland
 Linda Carlson
 Tim Carr
 Catholic Charities Corporation
 Charles Schwab & Co., Inc.
 David & Kathleen Cicconetti
 Ellie & Mark Cipriani
 Cisco Systems, Inc.
 Rich & Lisa Clark**
 Stephen & Susan Clark
 Judith Collins
 David Comernisky
 Richard Cooper
 Carol Crawford
 Mary Ann Crawford
 Eric & April Csernyik

John & Olivia Cunningham**
 Tim & Rebecca Cusick
 Mark Cutujian
 Barbara Daigneau
 Dannie Moore & Co. Home
 Sales & Interior Design
 Frances Davis
 The Davis Family Charitable
 Fund of Cleveland
 Foundation
 Linda & Woody Davis**
 Deerfield AG Services, Inc.
 Richard DeShon
 Janet Dettore
 Jack & Jill Dewitt
 Diebold Employee
 Charitable Fund
 Nancy E S Dines Trust
 Dingwell Family Charitable Fund
 Diversified Energy Company
 Derek & Samantha Drayer
 Clarence & Connie Drennon
 DW Fastener
 Karen Eckart
 Robert & Kathleen Eisenman
 Paul & Melinda Ensinger**
 Equitable Foundation
 Erie Insurance
 Fans of Fabulous Voices
 and Beams Bands
 William & Karen Feth
 Lisa & Patrick Fox**
 Fraternal Order of Eagles Aerie
 2736 (Portage Lakes)
 Joan Freeman
 Fresh Thyme Market & Fresh Thyme Giving
 Tree Foundation
 Judith Frost**
 Daniel & Edna Gabelman
 Genentech
 Elton Glaser
 Stuart & Sheri Glauberman
 The Thomas L. and Margaret M.
 Gower Fund of the Akron
 Community Foundation
 Grace Cathedral
 Tim & Shanon Gray
 Great Lakes Akron Freightliner
 David & Elizabeth Griffing
 James and Deborah
 Haag Foundation
 James & Debra Hagarty**
 Holly & Gary Hallman
 John Hanna
 Jacqueline Hartfiel
 David Heller

Ms. Bernice Herring
 Adrienne Hester
 James Hill & Alena Frate
 Laura Hintz
 Kenneth & Mary Hlavac
 Ramona Hood & Family
 Kim Hoover
 Mary Hopkins
 HzW Environmental
 Consultants, LLC
 Donald Imobersteg
 Infinity Construction Co., Inc.
 Charles & Carolyn Jackson
 Jeffie's Choice, Inc.
 Judy Jones
 William Jordan
 James & Susann Kandell
 John & Christine Kellamis
 Mike & Karen Kelly
 Alan & Pamela Keltyka
 Gerald Kerr
 Nancy Kerr
 Richard & Julie Keslar
 Jean-Claude Kihn & Brigitte V. Verse
 Timothy & Aleta Killian
 Sharon Kimble
 Ronald & Linda Kintz
 Daniel Kirkpatrick
 Kurt & Judith Kneidel
 Pamela Kokomoor
 Patricia & Wayne Kroah
 Richard & Stacey Kyle
 Shirley Landis
 Theresa Lash-Ritter**
 Aaron Lear
 Mia Lewis
 Linda Lindsay
 LTA Research and
 Exploration LLC Fund
 Lubrizol Advanced
 Materials, Inc.
 Macy's
 Rita Kelly Madick**
 Mary & Mark Mahoney
 Mary Mann
 Paul Manofsky
 Elizabeth Manson
 James & Penny Marshall
 Joe & Sara Marulli
 Eileen McClarnon
 Karen McClendon
 James & Diana McCool
 John McCoy
 Alice McFarland**
 Nancy McGrath

Verna McKibben Memorial
 Foundation
 Jacqueline McMillen
 Richard & Kimberly Merrick
 Harry & Anne Mestel Foundation
 Miller Transfer
 Amy & Ronald Miller
 Eric & Margaret Miller**
 Robert & Tracy Miller
 William & Marilyn Miller
 William & Toni Miller
 Brent & Marilyn Minney
 Kristine Mogen
 Amanda Montgomery
 George and Genevieve Moore
 Family Fund of the
 Portage Foundation
 Marshall & Mary Moore**
 Stephen & Stephanie Morgan
 Andrew & Anne Morse
 Charlene & John Mozena
 The R.C. Musson & Katharine
 M. Musson Charitable
 Foundation
 Richard & Angela Neeley
 John & Paige Nicholas
 John Nielsen
 Ohio State Eagles Charity Fund
 Kathleen Orosz
 Ellen Orrill
 Norma Ott
 Stanley Pace**
 The Papa John's Foundation
 for Building Community
 Kelly & Heather Pariso
 Pavlich Family Charitable Fund
 Joshua Phillips
 PNC Foundation
 Presentation of Our Lord
 Orthodox Church
 Progressive Insurance
 QT Equipment
 Roger & Gwen Rains
 Tia & Chad Ramlow
 David Ray
 Donald & Margaret Rearick
 Perry & Mary Reghetti
 Reichert Family Fund
 David Reynolds
 Samuel & Cynthia Reynolds
 Julie & Jon Ridgway**
 Rittman Loyal Order
 of Moose 860
 Tanya Rivard
 Larry & Emily Rock
 Rockwell Automation
 Joyce Rodek

Robert & Patricia Roller
 The Glenn D. Rummell
 Charitable Fund of Stark
 Community Foundation
 George & Diane Sarkis
 Save A Lot
 Mike & Jennifer Saxon
 Christine Sayre**
 Nick Schepis
 Tim & Vicki Schnee
 Catherine Schoenewald
 Ryan Schwartz
 Charlene Schweinberg
 Michael & Lue Schwing
 William & Jessica Shaheen
 Sandra & Eric Shaw
 Earl & Nancy* Sheehan
 Kate Sheppard & Lewis Sage
 William & Lori Shivers
 Robert Shott
 Lawrence Shotwell
 Jeannette Shoup
 Cindy Shugars
 Tim & Elaine Sisler**
 Eric & Laura Speakman**
 St. Mark Lutheran Church
 St. Michael the Archangel
 Catholic Church
 Stark County Auditor's Office
 Stanley & Claudia Stephan
 Janet Stewart
 Dennis & Isabelle Stombaugh
 Gary L. Stonum & The
 Honorable Marilyn
 Shea-Stonum
 James Strain
 Michele Strayer
 Debra & Ken Stress
 Erwin T. Su, DDS - Pediatric
 Dentistry
 Summa Health
 Mary Svetlik
 Micah Tedeschi
 Temple Beth Shalom
 Temple Israel
 Vince & Melanie Thompson
 Jonathan Thornton** 🍷
 Karen Tolhurst
 Ted Traut
 Stuart & Gloria Treiber
 Nancy & Francis Treichler
 UH Portage Medical Center
 Alane Updegraff
 Howard & Trudi Van Orman
 Verna & John Vander Kooi
 Timothy & Linda VanDuzer
 James & Linda Venner

Lavonne Voelz
 Herb & Becky Waidmann
 Jessica Wake
 Adalie & Ray Walker
 Christine & Michael Walker
 Gretchen Waltman
 William & Beth Wappler**
 Wayside Furniture
 Carolee Weigand
 Orren D. and Polly G. Weitzel
 Fund of the Wayne County
 Community Foundation
 Wendell L. Willkie, American
 Legion Post 19 (Akron)
 WesBanco Bank, Inc.
 Dean & Mary Ann Wheeler
 Clayton Whitney
 Douglas & Barrie Whittington
 Whole Foods Market
 Community Giving Program
 Samuel & Susan Wilkof
 Woodforest National Bank
 William & Johanna Wooldredge
 Patrick & Tracy Zappone**
 Stanley Shalom Zielony Institute
 for Nursing Excellence
 Zion United Church of
 Christ Baltic
 Geoffrey & Stacey Zion



🍷 Special thank you to these donors who made an additional investment in 2025 to **Nourish Our Neighbors: A Food Recovery Campaign in Response to Government Funding Cuts**. Learn more about their impact on pages 6-7.

* deceased
 ** Sustainer Circle Member
 Every effort was made to ensure the accuracy of this report. To report errors or omissions, please contact Terri Lessnau at tlessnau@acrfb.org or 330.535.6900.

Foodbank Major Partners

Major Partners have contributed more than 30,000 meals through product donations, financial contributions or a combination of both. Thank you, Major Partners, for continuing to make a difference.

Visionary Partners

Providing more than 1 million meals in 2025



THE J.M. SMUCKER Co.



Greg & Tricia Griffith

David & Cheryl Venarge

Guiding Partners

Providing more than 300,000 meals in 2025



Leadership Partners

Providing more than 150,000 meals in 2025



Foodbank Major Partners

Visionary Partners

1 million+ meals

The County of Summit
Giant Eagle
Greg & Tricia Griffith
PepsiCo Beverages
North America
Sam's Club
The J.M. Smucker Co.
David & Cheryl Venarge
Walmart & Walmart
Foundation

Guiding Partners

300,000+ meals

ALDI
The Parke K. and Josephine
B. Allensworth
Memorial Fund at Stark
Community Foundation
Anonymous (2)
The Anonymous Charitable
Fund of Stark
Community Foundation
Jon & Kitty Antalvari
Buehler's Fresh Foods
Case Farms
Cleveland Clinic
The Danner Foundation Fund
FirstEnergy Foundation
GAR Foundation
The Gessner Family
Foundation
Robert & Nancy Gessner
Heinen's Grocery Store
The Hoover Foundation
Kaulig Companies
Championship
The Edward A Langenbach
Trust Fund
Meijer
Robert O. & Annamae Orr
Family Foundation
Shearer's
Starbucks Coffee Company
Stark Community Foundation
Stark County Community
Action Agency
Target
Tam Taylor
Bill & Joan Thomas
Timken Company Charitable
and Educational Fund
Westfield

Leadership Partners

150,000+ meals

Akron Community
Foundation
Allied Witan Company
Amazon
Anonymous (2)
Bauhart Family
Bimbo Bakeries
BJ's Wholesale Clubs
City of Akron
City of Canton
City of Cuyahoga Falls
Stuart & Pam Clink
Akron Summit Community
Action, Inc.
Enterprise Mobility
Foundation
Fresh Mark, Inc.
GOJO, Makers of Purell
The Goodyear Tire &
Rubber Company
David & Nicole Groves
Sandra L. and Dennis
B. Haslinger Family
Foundation
Sequoia Financial Group, LLC
The Huntington Foundation
Huntington-Akron Foundation
Bill & Pearl Lemmon
The Keith D. Monda Family
Nationwide Foundation
Prairie Farms Orrville
David & Julie Pratt
Louise Pursley
Sharing Excess, Inc.
Mark Sterling
Synthomer Foundation
Brian & Beth Tierney
Mission Partners
60,000+ meals
Akron Area Interfaith Council
Akron-Canton Regional
Foodbank Staff
American Electric Power
American Electric Power
Foundation
The Nancy Andrews
Family Foundation
Anonymous (4)
Atlantic Food Distributors
Simon Badinter

Barberton Community
Foundation
BCF Endowment Fund
The Beaver Excavating
Company
Ken & Gerri Blum
Family of H. Peter Burg
Kenneth L. Calhoun
Charitable Trust
The Christ Foundation
Citizens
Coca-Cola Bottling Co.
Coldiron Family Foundation
The Mary S. and David C.
Corbin Foundation
Country Pure Foods
Paul & Carol David
Foundation
Dollar General
Enbridge Gas Ohio
Famous Enterprises, Inc.
Alex R. Feil & Arabella
Winters
The Fremont Company
Charles & Monique Fuenning
GPD Group
Bruce & Erica Greer
Health Foundation of
Greater Massillon
John Hinds
I Deal Specialties
Integrated Marketing
Technologies
Nancy Istenes & Sean Ward
Kovatch Castings, Inc.
Kovatch Family
Charitable Fund
James & Grace Kozak
Kraft Heinz Company
The Lehner Family
Foundation
Roger & Susan L'Hommedieu
Andy & Emily Little
Marathon Petroleum
Company - Ohio
Refining Division
Marc's
MCTV
Kathy & Andy Moock
The Thomas W. Hudson
Charitable Fund of
Muskingum Watershed
Conservancy Foundation

North Canton Medical
Foundation
Susie & Tony Paparella
Joan & Lou Perry
PPG Industries, Inc.
The Pablo Javier Rozenbom
Charitable Trust Fund
RPM3 Charitable Fund
Anonymous
Sandridge Gourmet Salads
Save A Lot
Sheetz, Inc.
Sheetz For the Kidz
The Sisler McFawn
Foundation
Subaru of America, Inc.
& Serra Subaru
Anonymous
Kevin Tucker & Patricia Howell
United Healthcare of Ohio
US Foods
Joseph & Cynthia Weinstein

Community Partners

30,000+ meals

Akron RubberDucks
Tony Alexander
Allstate Foundation and
Allstate Employees
Anonymous
Richard & Linda Arter
Avery Dennison
James & Lisa Backlin
Ronald & Grace Barber
Bober, Markey, Fedorovich
& Company
Amy & Scott Borcherding
Bridgestone Americas
Brubaker Family Foundation
Burns & McDonnell
Engineering Co., Inc.
Buurma Farms
Canton LMCC, North Central
Ohio Chapter, NECA
Phillip & Debra Canuto
Cargill, Inc.
Lynn Cavalier
Anonymous
Charter Next Generation
Chick-fil-A, Inc.
City of Stow
CVS Health
Dave's Markets
Rich & Jacqueline Deger



Dr Pepper Snapple Group
East Central Ohio Building
& Construction
Trades Council
The Dale and Peggy
Koblentz Family Fund
Faith Family Church
Fastenal Company
Catherine & Gerhard Feagles
FedEx
Marsha Field Jones
Fifth Third Bank
First Congregational Church
of Hudson and First Serve
Dan & Holly Flowers
Walt & Kathy Fortney
Fraternal Order of Eagles
Aerie 141 (Canton)
Fraternal Order of
Eagles Aerie 2223
(North Canton)
Fresh Thyme Market &
Fresh Thyme Giving
Tree Foundation
Laura B. Frick
Charitable Trust
Frito Lay, Inc.
Mitchel & Simone Fromm
Kevin & Peggy Gaffney
Rebecca German
Christopher & Jane Gessner
The Giant Eagle Foundation
Bill & Rose Graessle
David & Karen Grau
Frederick & Jane Griech
Grocery Outlet Bargain Outlet

Sue Habyan
Donald Hafner
Nancy Harwood
James Hayne
Robert & Nancy Henry
Ramona Hood & Family
W. Henry Hoover Fund
BoxLunch
Huntington National Bank
Charles R. Jelm Charitable
Foundation, Inc.
Ralph R. and Grace B.
Jones Foundation/
Greg and Kathy Long
Steve & Debbie Joseph
Garry Jurgens
The Robert & Marthe
Jursich Foundation
Daniel Kellogg
Kendall House, Inc. dba
Kentucky Fried Chicken
James & Joanne Komos
James & Maureen Kovach
Vincent & Maryann Kyle
Land O'Lakes
Rick & Lisa Laubacher
Dale A. & Lucinda J.P. Leppo
Betty Levinson
Jim & Sally Little
Jeffrey & Susan Lubash
LyondellBasell
Michael & Joyce Markel
Michael & Marietta Marquart
Susan L. Martin
Janet Marting
Mast Trucking

The Maynard Family
Foundation
Matt & Baily Meeker
Florence Allen*
The Meyer Company
Charitable Fund
Chris Meyer & Colleen
Denholm
Melany Minney
John & Karen Monacelli
Mondelez Global LLC
NADA Foundation
Harvey & Kim Nelson
NJM Insurance Group
Drs. Keith and Susan Novak
(Hong) Charitable
Trust Foundation
The M.G. O'Neil Foundation
Hyun & Catherine Park
Parker Hannifin Corporation
Anonymous
Buffy Phillips
Prairie Farms
Gary & Cheryl Prather
Ripple Effect CLE Fund
Charles E. & Mabel M. Ritchie
Memorial Foundation
Rotary Club of Fairlawn
Mary Anne Rothermel
Patricia Ruddle
James & Cynthia Rudick
Dr. Sandy Selby
Nilesh & Holly Shah
Larry & Bonnie Shirk
Kenneth Siloac

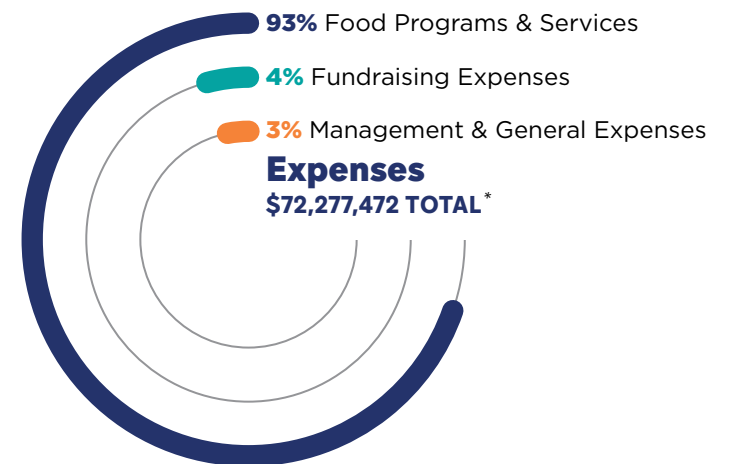
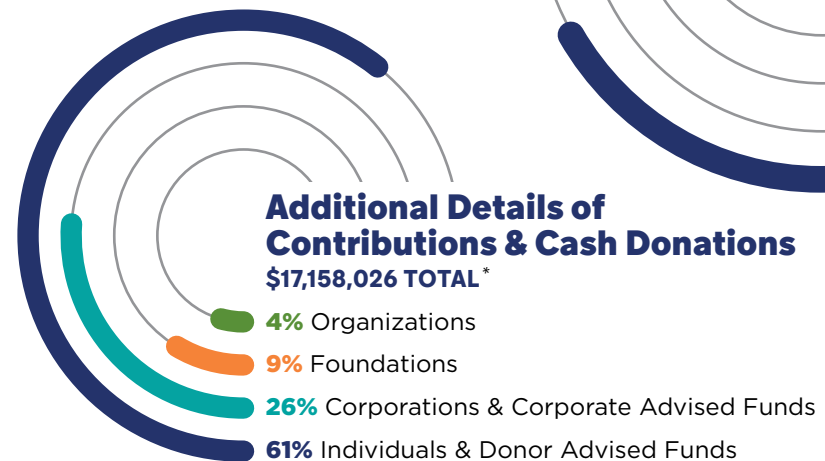
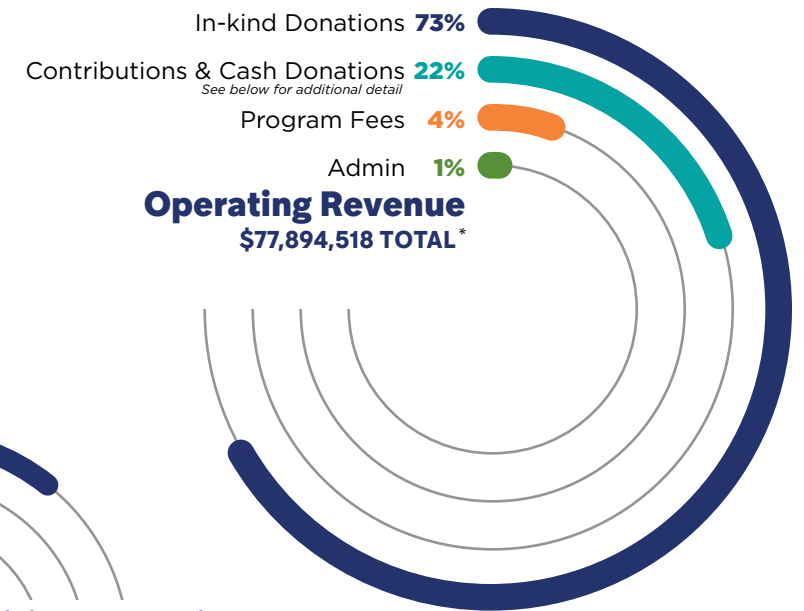
Lloyd L. and Louise K. Smith
Memorial Foundation
Tim & Jennifer Smucker
T.L. Squire & Company Inc.
Stark Hunger Walk
Kerry & Julian Steinberg
Jeffrey W. Sterling
The Edwin J. Thomas
Foundation
Thrivent
Barb & Don Tolliver
Larry & Blythe Toops
Truenorth
Carl Vogelsang
Michael & Maureen Wartko
Tom & Peggy Wartko
Wayne County Community
Foundation
Barry Weidner Memorial
Golf Tournament Fund
Thomas & Cheryl Wells
Denise & Norman Wells Jr
The Welty Family Foundation
Zach & Sharon Wemple
Werner-Marsh Family
Ray Williams
Anne & Butch Wilson

To learn more about how
you can become a Foodbank
Major Partner and its benefits,
please contact Terri Lessnau
at tlessnau@acrfb.org
or 330.535.6900.

Where does our food come from?



Financials



*Unaudited financials. Financial statements are available upon request.

Mission

To lead a collaborative network that empowers people to experience healthy and hunger-free lives. We distribute food to feed people and we advocate, engage and convene our community in the fight to end hunger.

Vision

A thriving community free of hunger.



Values

Collaboration

working together to leverage the wisdom of collective thinking

Compassion

acting with kindness, grace and a willingness to help

Inclusion

creating an environment where all people feel safe, welcomed, respected and valued

Innovation

embracing creativity, risk and an openness to being different

Integrity

pursuing ethical, credible and honorable conduct

Service

striving to exceed expectations

Foodbank Leadership

2025 OPERATING BOARD MEMBERS

Greg Long *CHAIR*
Retired, Long, Cook & Samsa, Inc.

Teri Lash-Ritter *VICE CHAIR*
Cleveland Clinic Akron General

Doug Grassian *SECRETARY*
The Goodyear Tire & Rubber Company

Dan Brophy *TREASURER*
Huntington Private Bank

Jennifer Baccon
Akron Children's Hospital

Lisa Backlin
Parts Town

Amy Borcherding
The J.M. Smucker Co.

Rob Bowers
Westfield

Alison Breaux
Summit County Court of Common Pleas

Jerod Cherry
ESPN Cleveland

Rich Clark
GOJO, Makers of Purell

Jason Dodson
Roetzel & Andress

Amanda Graaf-Kurta
Giant Eagle

Nancy Hutchinson
Sherwin-Williams

Alicia LaMancusa
Akron Children's Hospital

Terry Link
Seaman Corporation

Amanda Montgomery
Materion

Hyun Park
FirstEnergy

Alicia Pucky
Fresh Mark Inc.

Laura Query
Nationwide

John Szarka
The Timken Company

Jonathan Thornton
Whitaker House Publishing

Frank Wiley
Giant Eagle

Daniel R. Flowers *PRESIDENT & CEO*
Akron-Canton Regional Foodbank

ENDOWMENT BOARD MEMBERS

Harvey Nelson *CHAIR*
Retired, Main Street Gourmet

Mark Baer *VICE CHAIR*
Retired

David Kern *SECRETARY*
Lewis Brisbois Bisgaard & Smith, LLC

Vi Leggett *TREASURER*
Aultman Foundation

George Sarkis
Retired, Roetzel & Andress

Gary Benz
Norfolk Consulting Group

Cheryl Venarge
APV Engineered Coatings

Daniel R. Flowers *PRESIDENT & CEO*
Akron-Canton Regional Foodbank

EXECUTIVE LEADERSHIP TEAM MEMBERS

Daniel R. Flowers
President & CEO

Colleen Benson
Chief Development Officer

Carol Crabtree
Vice President, Human Resources

Katie Carver Reed
Executive Vice President

Tim Sisler
Advisory CFO

Michael Wilson
Vice President, External Affairs



Nonprofit Org
U.S. Postage
PAID
Akron, OH 44311
Permit #626

350 Opportunity Parkway
Akron, OH 44307-2234
330.535.6900
akroncantonfoodbank.org



MAIN CAMPUS 350 Opportunity Parkway, Akron, OH 44307
STARK COUNTY CAMPUS 1365 Cherry Ave. NE, Canton, OH 44714

© 2026 The Akron-Canton Regional Foodbank is a 501(c)(3) nonprofit organization recognized by the IRS, EIN# 34-1369388.

This report is available online at akroncantonfoodbank.org/resources.

